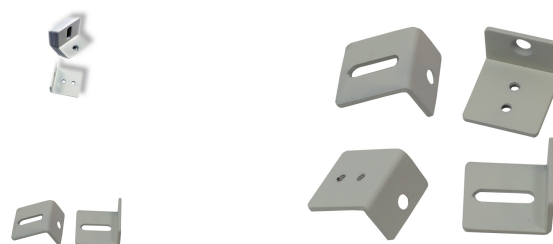


# Fenestra Advance Wandhalterung



## Product information "Fenestra Advance Wandhalterung"

### LED Panel

The Litegear® Fenestra Advance LED panels are made to be installed in to ceilings or to be hung on walls or ceilings. They have a low power consumption and a long lifespan. With optional hanging kits (a set contains 4 steel wires) the panel can be palced over desks or work areas. The LED light has no IR wavelength hence, so that you will feel no heat immision on your skin. Our LED panels give you the imagination of a sky window with naturally light floated rooms. Litegear® Fenestra LED panels are perfect for use with computer screens because the almost give no reflections. A Fenestra Square power can replace a recessed ceiling light with 4 x T8 18W flourescent tubes and can save around 55% energy costs.

The Litegear® LED Panels are available in different dimensions and color temperatures. They look really stylish and have a smooth light output. We offer suitable LED driver with constant current from to drive this panel with different power consumption. Some drivers are dimmable in brightnes via Dali, DMX or 0-10V up to the specification of the driver. Advance Panels have a very high lumen output.

## Technical Details:

Housing Material:	metal
Housing Color	greywhite
Net Weight:	162 g

### Information and Downloads:

