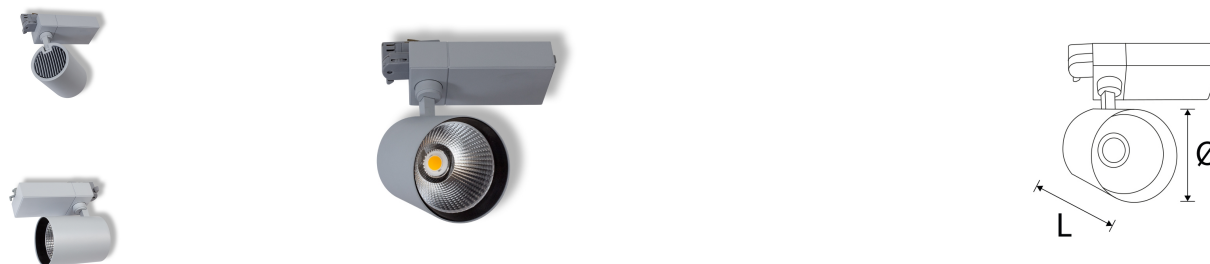


New-Szena 40/35-840-3150LM SI



Technical Details:

Luminous Flux:	3150 lm
LED Output:	40 W
Light Yield:	90 lm/W
Light Temperature:	4000 K
Light Color:	neutralwhite
Color Rendering Index:	≥85 Ra
Color Consistency (SDCM):	<3
Beam Angle:	40 °
Swappable Reflector:	✓
Light Emission:	downward
LED-Chip Manufacturer:	Citizen
LED-Chip:	COB
Number of LED:	1
Ignition Time:	<0,5 s
Input Current:	AC 220 - 240V, 50/60Hz
Power Consumption:	35 W
Contains Driver:	✓
Driver Manufacturer:	Philips
Power Factor (PF):	>0.95
Input Driver:	lighting track
Output of Driver:	DC 32-42V, 900-1050mA
CC/CV:	CC
Output Current Adjustable:	✓
Input Lamp:	Power rail
Switching Cycles:	>100.000
Electrical Protection Class:	II
Ambient Temperature (TA):	-10°C - 40°C
Storage Temperature:	-20°C - 55°C

Dimensions:	170x98x195 mm
Mounting:	Decke,Stromschiene
Montageart:	surface mounted
Pivot Range pan:	355 °
Pivot Range tilt:	90 °
IP Class:	20
Housing Color	grey
Housing Color (RAL Code):	similar 7040
Housing Material:	aluminum
Coating:	powder-coated
Cover:	clear
Net Weight:	1038 g
Type of Packaging:	box
Dimensions of Packaging:	200x110x220
Weight incl. Packaging:	1.178 kg
Content Master Package:	12
Dimensions of Master Package:	430x380x470 mm
Weight Master Package:	15,71 kg
Product Line:	Advance Line
Warranty	3 years
Operating Hours:	50.000 h L70/B20
Disposal Obligation:	✓
Customs Tariff Number:	9405499090
Certifications	CE,LM80
Barcode:	4250557810249
Power Select:	35/42W

Information and Downloads:

