

Phirna HighBay Reflektor



Product information "Phirna HighBay Reflektor"

LED Highbay

Litegear® Phirna LED-highbay is made of high-quality aluminum and with an optical, opal PC cover underneath the LED light sources. Phirna convinces with a very good system efficiency of up to 150 lumen / watt. With over 22,000 lumens of total luminous flux, this Litegear highbay luminaire is at a similar level to other LED spotlights with 180-200 watt power consumption. Thanks to its IP65 design, the LED light can also be used outdoors or in halls with high dust levels. Phirna is also ideal as a sports hall lamp. The flicker-free, emissive light protects the eyes and the broad beam angle produces a large, homogeneous illumination. Optionally, the lamp can also be equipped with dimmable LED drivers. The light color is similar to the daylight. This hall floodlight can be suspended by means of steel cables or chains or screwed directly to ceilings.

Comparability with discharge lamps:

150W Phirna LED equals: 400W HQL

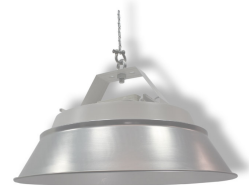
advantages:

- very low weight
- optimum heat dissipation through large-surface aluminum housing
- weatherproof: IP65-IK08 suitable for outdoor use
- High system efficiency: up to 150lm / W
- long life: up to 50,000 hours L80B10
- optional extensive accessories

Applications:

Industry, sports halls, retail space, exhibition, showroom, warehouses, loading areas and canopies

You can connect up to 9 pcs. Phirna highbay on a 10A C circuit breaker or 15 pcs. on a 16A C circuit breaker.



Technical Details:

Switching Cycles:	>100.000
Ambient Temperature (TA):	-20°C - 50°C
Dimensions	720x155 mm
Net Weight:	865 g
Warranty	3 years

Information and Downloads:

