

Alwetra 1500 30-47W-840-6700LM Flood



Product information "Alwetra 1500 30-47W-840-6700LM Flood"

Modular, weatherproof LED linear light system

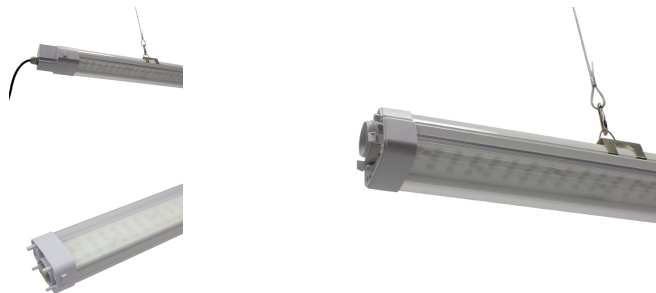
Alwetra is a dustproof and splash-proof IP65, LED strip lighting system for use in wet rooms or outdoors under canopies. The system consists of luminaire modules with selectable output power 30-47W by means of small DIP switches and external dimming via an analog 1-10V signal. The feed in takes place via connectors and a seven-wire through-wiring. By means of a toggle switch, one of the three current phases can be selected, thus the luminaires can be switched on and off in groups as needed. In just a few seconds, two luminaire modules or luminaires and blank modules can be connected without tools. For weatherproof infeed, we have matching feed in boxes and suitable end caps. For permanent stabilization, the modules are additionally mechanically connected with a steel clamp. Mounting clips are attached for mounting on ceilings and can also be used with a hook to suspend the system on steel ropes or chains. Optionally, we will also offer battery-operated emergency lighting modules and sensor modules.

Highlights:

- Impact-resistant and weatherproof design: IP65 / IK10
- Internal through-wiring: 5 x 2.5mm² and 2 x 1.5mm² for analog dimming over 1-10V
- fast, almost tool-free installation
- high system efficiency: > 130 lumens / watt
- Selectable output power: 30, 36, 40, 47W (thus ideal replacement for one to two times 58W T8 (and 49W/T5) fluorescent tubes with 50-65% power saving
- long life 50,000h and low maintenance costs
- motion and daylight dimming controllable by external sensors

Applications:

- industry and food production



Technical Details:

Luminous Flux	6700 lm
Light Yield:	143 lm/W
Light Temperature:	4000 K
Color Rendering Index (CRI)	≥80 Ra
Color Consistency (SDCM):	4
Power Consumption:	47 W
Power Factor (PF):	0.95
Operating Hours:	>50.000 h L80/B10
Switching Cycles:	>100.000
Ignition Time:	<0,5 s
Ambient Temperature (TA):	-20°C - 50°C
Housing Material:	aluminum
Housing Color	white
Dimensions	1460x80x78 mm
Net Weight:	2420 g
Warranty	5 years

Information and Downloads:



- cold stores and greenhouses