

# DURATA LINE 30-840-2800LM FL



## Product information "DURATA LINE 30-840-2800LM FL"

### Linear Office LED light line system

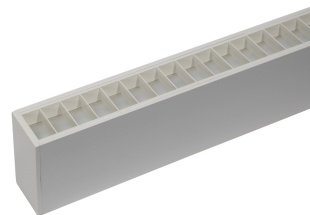
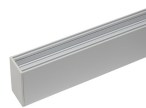
Durata Line is a modular LED light line system for offices, schools and retail spaces. The lights can be fastened directly to the ceiling with clips or suspended using steel cable sets. Durata Line is available in different versions such as different beam angles, light colors and optimized glare control, for example for computer workstations. Available housing colors: black or white

### Technical specifications:

- modular light line system for Office, shop or schools
- High energy savings through high system efficiency of up to 105 lumens / watt
- optionally also available with dimmable drivers
- eye-friendly optics with optimized glare control UGR < 19 and flicker-free light

### selectable beam angle:

100 ° UGR: 22, 70 ° UGR < 19 ;, 66 ° UGR < 13, 43 ° UGR < 6, asymmetric 60 °



### Technical Details:

Luminous Flux	2800 lm
Light Yield:	93 lm/W
Light Temperature:	4000 K
Color Rendering Index (CRI)	≥80 Ra
Color Consistency (SDCM):	4
Power Consumption:	30 W
Operating Hours:	>50.000 h L80/B20
Switching Cycles:	>100.000
Ignition Time:	<0,5 s
Ambient Temperature (TA):	-10°C - 40°C
Housing Material:	aluminum
Housing Color	white
Coating:	powder-coated
Dimensions	1550x50x95 mm
Net Weight:	2810 g
Warranty	5 years

### Information and Downloads:

