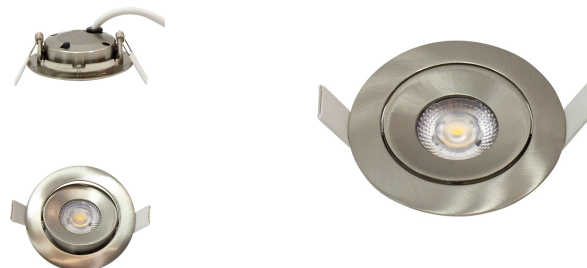


BREVIA SWING 5-927-930-370LM Triac Dim



Product information "BREVIA SWING 5-927-930-370LM Triac Dim"

very flat recessed LED luminaire

- compact dimensions, robust housing made of aluminum just 24mm high
- selectable CCT color via switch: 2700K/3000K BI-color COB with high CRI >90
- flickerfree light
- widely protected against dust and humidity (frontside IP44)
- dimmable via TRIAC: trailing- or leading edge dimming
- Suitable for 68-75mm cutouts
- Easy installation via included connection terminal with relief
- built-in LED driver
- tiltable light beam +/-10°
- available in 3 different housing colors: black, white, satin-nickel

Applications:

- Entrance hall, sanitary facilities, offices, living rooms, hotel, shop

Technical Details:

Luminous Flux	370 lm
Light Yield:	74 lm/W
Color Rendering Index (CRI)	≥90 Ra
Color Consistency (SDCM):	4
Power Consumption:	5 W
Operating Hours:	>25.000 h L80/B20
Switching Cycles:	>30.000
Ignition Time:	<0,5 s
Ambient Temperature (TA):	-10°C - 35°C
Housing Material:	aluminum
Housing Color	silvergrey
Coating:	vernickelt
Pivot Range tilt:	10 °
Dimensions	82x28 mm
Cut-Out Dimensions	72-76 mm
Net Weight:	142 g
Warranty	3 years

Information and Downloads:

