

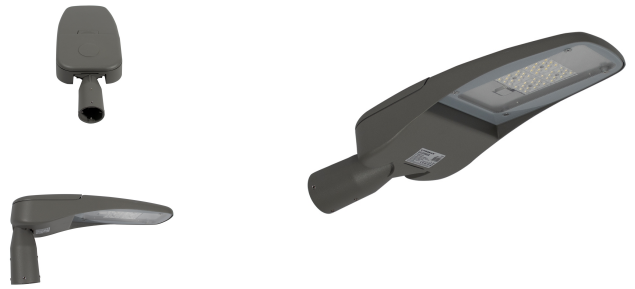
Aversa 60-740-8200LM



Product information "Aversa 60-740-8200LM"

LED Street Light

The Litegear® Aversa is a versatile streetlight. It can be used on roads or parking areas. It has a high efficiency. Due to its long lifespan maintenance cost will decrease dramatically. Due to its low power consumption you will get to a quick Return on Investment. Nice sleek design and reliable LED chips guarantee an excellent performing product. Aversa has a very attractive price. It is water resistant.



Technical Details:

Luminous Flux	8200 lm
Light Yield:	137 lm/W
Light Temperature:	4000 K
Color Rendering Index (CRI)	≥70 Ra
Color Consistency (SDCM):	6
Power Consumption:	60 W
Power Factor (PF):	0.96
Operating Hours:	>100.000 h L70/B50
Switching Cycles:	>100.000
Ignition Time:	<0,5 s
Ambient Temperature (TA):	-20°C - 40°C
Housing Material:	aluminum
Housing Color	betongrey
Coating:	lacquered
Pivot Range tilt:	90 °
Dimensions	600x260x110 mm
Net Weight:	5003 g
Warranty	5 years

Information and Downloads:

