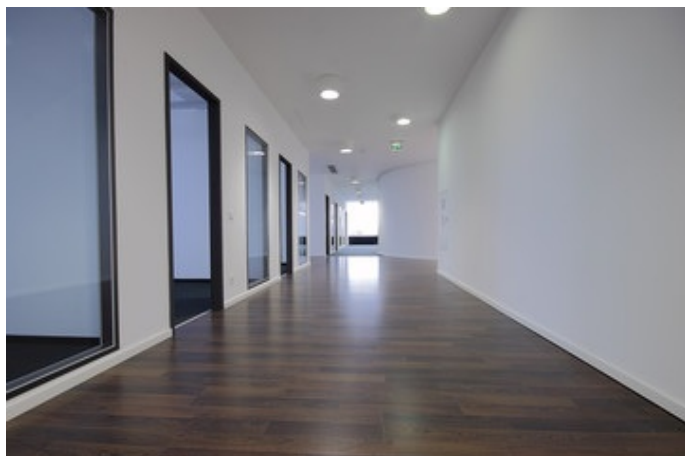


Nopa PRO Batterie Notstromtreiber LV 3W 1/3h



Product information "Nopa PRO Batterie Notstromtreiber LV 3W 1/3h"

Universal emergency driver/switch for LED luminaires with integrated battery pack

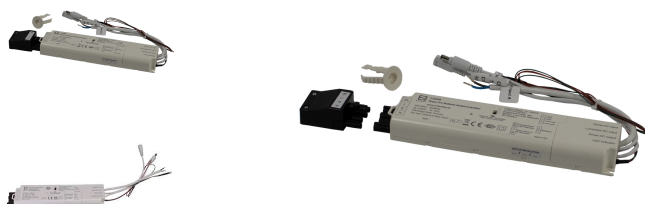
In combination with a Litegear® NoPa Pro Kit, you can build luminaire with battery-assisted emergency lighting function suitable for constant-current LED luminaires or panels. NoPa Pro is suitable for LED luminaires with 10-55V DC input. The NoPa kit is used between the LED driver and the light source. In the event of a power failure, the internal diverter automatically switches to battery-powered emergency light function with a EMERGENCY power of 3 WATT. The emergency power operation is guaranteed for at least 1-3 hours selectable.

The light switch can continue to be used as before. Nopa is equipped with an automatic self-test function. The system carries out weekly functional tests and a long-term test once a year. An external LED displays the status of the device. At present manual tests can be carried out by means of a push-button or via IR remote with additional IR-receiver. The Li-Ion battery pack is integrated.

- compact dimensions
- low standby power consumption only 0.8W
- Long battery life >5 years

Suitable for supplementing the following LED luminaires with constant current drivers.

Recessed lights. LED panels or LED downlights



Technical Details:

Ambient Temperature (TA):	0°C - 25°C
Housing Material:	Polycarbonat
Housing Color	white
Dimensions	240x53x26 mm
Net Weight:	312 g
Warranty	3 years

Information and Downloads:

