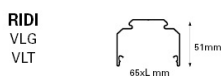
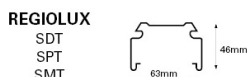
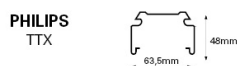
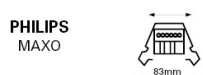


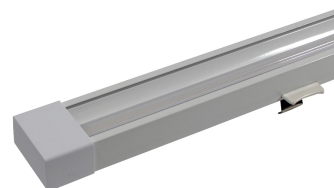
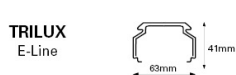
VERSALINK 1500 75W-840-12000LM Flood Dali DIM

Versalink

Kompatibilitätsliste Compatibility List



Liste de compatibilité Compatibiliteitslijst



Technical Details:

Luminous Flux	11250 lm
Light Yield:	150 lm/W
Light Temperature:	4000 K
Color Rendering Index (CRI)	≥80 Ra
Color Consistency (SDCM):	4
Power Consumption:	75 W
Power Factor (PF):	0.95
Operating Hours:	>50.000 h L80/B10
Switching Cycles:	>1.000.000
Ignition Time:	<0,5 s
Ambient Temperature (TA):	-20°C - 45°C
Housing Material:	aluminum
Housing Color	white
Coating:	powder-coated
Dimensions	1531x69x36,5 mm
Net Weight:	1950 g
Warranty	5 years

Product information "VERSALINK 1500 75W-840-12000LM Flood Dali DIM"

LED retro light module for linear light systems from different manufacturers

VERSALINK is a universal LED retrofit module which can be used in a variety of traditional lighting systems from different manufacturers. VERSALINK is compatible with up to 22 different light-line systems, (see compatibility list). The compatibility has to be tested and approved in advance by the user! Exchanging existing luminaire modules against a LED module can be done in a few minutes and is extremely easy and safe, as each LED unit has its own 7-core cable harness: (5 x 2.5mm² + 2 x 1.5mm²). The 5 basic wires serve as power supply with phase selection, the two additional wires can be used for dimming or as emergency power supply. The LED module is equipped with chips of 4000 Kelvin neutral white light color, on request we can also offer other light colors such as 3000K, 5000K or 6500K for different applications. The luminaire has a system efficiency of up to 150 lumens / watt and a long life span of > 50,000 hours L80B10. Additional 2 steel safety ropes with clips serve as adrop down protection when clipped into the trunking profile. Versalink is generally available in 2 different optical beam angles: 90 ° and 140 °, optionally also available in 60 °. For electrical bridging blank cover modules we offer additional harnesses with a length of 156cm.

Information and Downloads:



- High system efficiency of 150 Lumen/Watt guarantee high energy savings compared to fluorescent tubes up to 70% with fast return on investment
- easy and cost efficient exchange of existing luminaires with T8 fluorescent tubes by VERSALINK LED modules

- high luminous flux: 11.250lm max.
- Dali dimming
- VERSALINK can replace single or double tube fixtures by LED module
 - flicker free and instant start
-

- widely compatible with many existing trunking systems on the market (refer to list)

- Battery Emergency light function on demand

Applications:

- industry and warehouse
- supermarket, shops and exhibition halls
- car and truck service areas
- production and assembly lines