

RENOVIA VARIO 157/36-40-827-860-4800LM BAP, RF-Remote CCT-Adjust + Dim



Product information "RENOVIA VARIO 157/36-40-827-860-4800LM BAP, RF-Remote CCT-Adjust + Dim"

Surface mounting renovation luminaire

Renovia serves as a replacement for traditional surface mounted louver luminaires with fluorescent tubes. The larger housing can easily cover dirty edges outside the old luminaire housing, so no need for a complete ceiling painting.

Easy installation due to separate ceiling mount plate with electronic ballast with terminal. The LED light is simply hung in the holder, easy for service! Uniform, wide light distribution with low glare due to microprismatics optical material. Optical part made of UV and temperature-resistant polymethyl methacrylate (PMMA). Eye-friendly, flicker-free LED light. Long life wireless controlled electronic driver for CCT change and dimming via remote controller

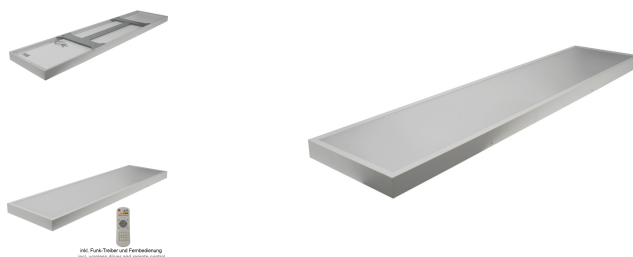
- Dimming and CCT adjust by included remote controller
- Available in 2 different sizes and power ranges.

Applications:

Änderungen vorbehalten
 Technical details are subject to change
 (c) 2017

Litegear GmbH
 An Fürthenrode 45
 52511 Geilenkirchen

Tel.: +49 (0)2451 48453-0
 Fax: +49 (0)2451 48453-13
 www.litegear.de



Technical Details:

Luminous Flux	4800 lm
Light Yield:	120 lm/W
Light Temperature:	2700-6000 K
Color Rendering Index (CRI)	≥80 Ra
Color Consistency (SDCM):	5
Power Consumption:	40 W
Power Factor (PF):	0.9
Operating Hours:	>124.000 h L80/B10
Switching Cycles:	>50.000
Ignition Time:	<0,5 s
Ambient Temperature (TA):	-30°C - 45°C
Housing Material:	aluminum
Housing Color	white
Coating:	powder-coated
Dimensions	1570x360x55 mm
Net Weight:	6130 g
Warranty	5 years

Information and Downloads:



EN12464-1

- laboratory, hospital, fitness center
- hall and reception
- Sanitary facilities and corridors