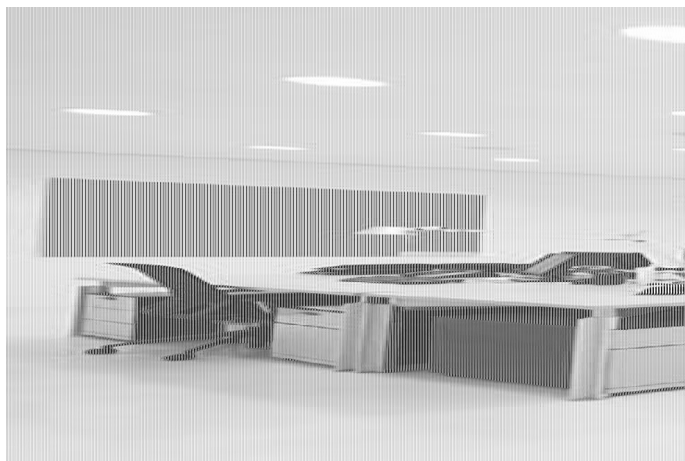


CIELLA LED-Unit 27-830/840-WH 3730lm



Product information "CIELLA LED-Unit 27-830/840-WH 3730lm"

LED downlight module

Litegear® Ciella LED module for combination with different ceiling mounting rings from 190 to 305mm in diameter. LED unit with switchable light colour: 3000, 3500, 4000 Kelvin using a switch. High system efficiency >120lm/W, thus Bafa eligible for refurbishment of existing buildings. Pluggable LED power supply with removable terminal box for through-wiring. The Ciella system is a lighting system for the renovation of ceiling openings of different sizes. You will receive 4 different ceiling rings for 160-180mm, 200-220mm, 250-270mm, 280-290mm ceiling cut-outs. The LED module is screwed onto the ceiling rings without tools. Power selectable LED driver from 350-700mA 15-30W in steps.

Areas of application: Refurbishment of built-in lights with energy-saving lamps. once or twice 18-36W CFL G23/G24.

Corridors, offices, sales areas, walkways, hotels, sanitary areas, changing rooms, warehouses, ancillary rooms, restaurants, canteens



Technical Details:

Luminous Flux	3730 lm
Light Yield:	124 lm/W
Light Temperature:	3000/3500/4000 K
Color Rendering Index (CRI)	≥80 Ra
Color Consistency (SDCM):	4
Power Consumption:	30 W
Power Factor (PF):	0.95
Operating Hours:	>70.000 h L80/B20
Switching Cycles:	>100.000
Ignition Time:	<0,5 s
Ambient Temperature (TA):	-20°C - 40°C
Housing Material:	aluminum
Housing Color	black/white
Coating:	lacquered
Dimensions	148x99 mm
Net Weight:	789 g
Warranty	5 years

Information and Downloads:

