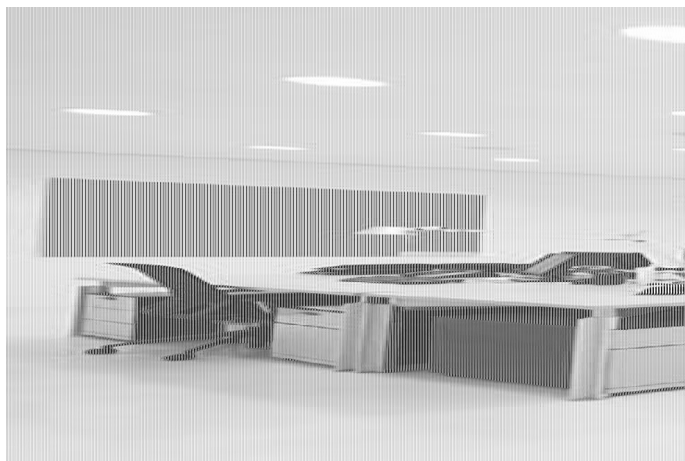


CIELLA Deckeneinbauring 245-275mm Auschnitt



Product information "CIELLA Deckeneinbauring 245-275mm Auschnitt"

LED downlight ring

Ciella recessed ceiling ring to adapt the optional Ciella LED-Modul: 285mm, for cutouts 250-270mm

Description of Ciella LED uni / systemt:

Litegear® Ciella LED module for combination with different ceiling mounting rings from 190 to 305mm in diameter. LED unit with switchable light colour: 3000, 3500, 4000 Kelvin using a switch. High system efficiency >120lm/W, thus Bafa eligible for refurbishment of existing buildings. Pluggable LED power supply with removable terminal box for through-wiring. The Ciella system is a lighting system for the renovation of ceiling openings of different sizes. You will receive 4 different ceiling rings for 160-180mm, 200-220mm, 250-270mm, 280-290mm ceiling cut-outs. The LED module is screwed onto the ceiling rings without tools. Power selectable LED driver from 350-700mA 15-30W in steps.

Areas of application: Refurbishment of built-in lights with energy-saving lamps. once or twice 18-36W CFL G23/G24.

Corridors, offices, sales areas, walkways, hotels, sanitary areas, changing rooms, warehouses, ancillary rooms, restaurants, canteens



Technical Details:

Housing Material:	aluminum
Housing Color	white
Coating:	lacquered
Dimensions	285x64 mm
Cut-Out Dimensions	250-270 mm
Net Weight:	471 g
Warranty	5 years

Information and Downloads:

