

# CONLUX Floodlight ASY100x17-1000-740-147000LM



## Product information "CONLUX Floodlight ASY100x17-1000-740-147000LM"

### LED Flood Light

Litegear® CONLUX is a stylish and modular LED outdoor floodlight. Available with different beam angels and power classes. Due to the use of a light weight aluminum housing, inox screws and strong bracket it has a excellent corrosion resistance. Conlux is the perfect solution for use in factories, sport fields, harbours, airports or for architectural applications. Because of it's weather sealed standard you can use it permanently outside in rough environment conditions. We use very efficient LED chips. SMD chips have a optimized heat dissipation to guarantee a long lifespan. Dimming function on option (Dali dimming). Very light weight total 23,00kg (15,8 + 7,2kg)  
 20kV surge protection device  
 Only 3-core cable needed

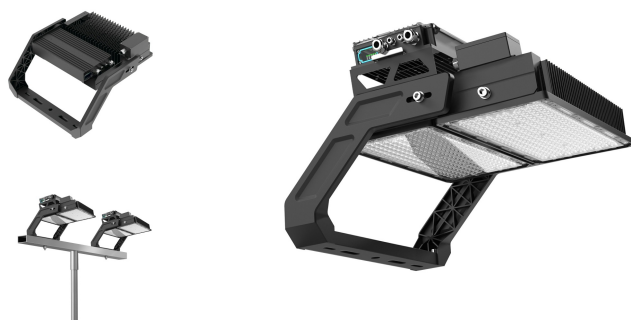
### Applications:

- sport field: Soccer, Tennis, Basketball, Golf
- harbour, airport, warehouse
- industrial and architectural applications

### Technical Details:

- Safety Tests: EN 60598-1:2015, EN 60598-2-5:1998, ZEK01.4-08, EN 62493:2010, IEC 60598-2-5: 1998, IEC 60598-1:2008, AS/NZS 60598.2.5:2002, AS/NZS 60598.1:2013
- EMC Test: EN 55015:2013, EN 61547:2009, EN 61000-3-2:2006+A1: 2009+A2:2009, EN61000-3-3:2013

Photobiological Safety: EN62471: 2008



### Technical Details:

|                             |                   |
|-----------------------------|-------------------|
| Luminous Flux               | 147000 lm         |
| Light Yield:                | 147 lm/W          |
| Light Temperature:          | 4000 K            |
| Color Rendering Index (CRI) | ≥70 Ra            |
| Color Consistency (SDCM):   | 3                 |
| Power Consumption:          | 1000 W            |
| Power Factor (PF):          | 0.95              |
| Operating Hours:            | >104.000 h L90B50 |
| Switching Cycles:           | >250.000          |
| Ignition Time:              | <0,5 s            |
| Ambient Temperature (TA):   | -20°C - 50°C      |
| Housing Material:           | aluminum          |
| Housing Color               | black             |
| Coating:                    | powder-coated     |
| Dimensions                  | 631x585x453 mm    |
| Net Weight:                 | 22900 g           |
| Warranty                    | 5 years           |

### Information and Downloads:

