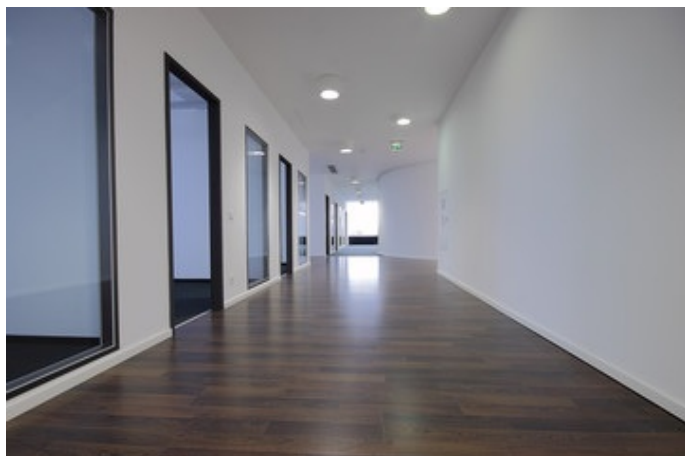


Nopa Batterie Notstromtreiber LV 3,3W



Product information "Nopa Batterie Notstromtreiber LV 3,3W"

Universal emergency driver/switch for LED luminaires with battery pack

In combination with a Litegear® NoPa Kit, you can build luminaire with battery-assisted emergency lighting function suitable for constant-current LED luminaires or panels. NoPa is available in 2 versions: LV version (Low Voltage) for drivers with an output voltage of 10-55V DC or an HF version (High Voltage) for lamps with a supply voltage of 50-300V DC, as well as 3.3W and 6.6W output power. The NoPa kit is used between the LED driver and the light source. In the event of a power failure, the internal diverter automatically switches to battery-powered emergency light function with a power of 3.3W to 6.6W. The emergency power operation is guaranteed for at least 3 hours.

The light switch can continue to be used as before. Nopa is equipped with an automatic self-test function. The system carries out weekly functional tests and a long-term test once a year. An external LED displays the status of the device. At present manual tests can be carried out by means of a push-button. The LiFePo4 battery pack is included.

- compact dimensions
- low standby power consumption only 0.8W
- Long battery life >5 years

Suitable for supplementing the following LED luminaires with constant current drivers.

Recessed and surface mounted lights. LED panels, damp-proof lights, light-line systems, low-bay lights, floodlights



Technical Details:

Ambient Temperature (TA):	0°C - 45°C
Housing Material:	Polycarbonat
Housing Color	white
Dimensions	184,7x30x21,4 mm
Net Weight:	178 g
Warranty	3 years

Information and Downloads:

