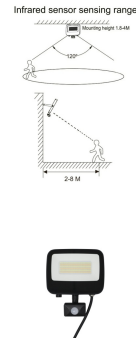
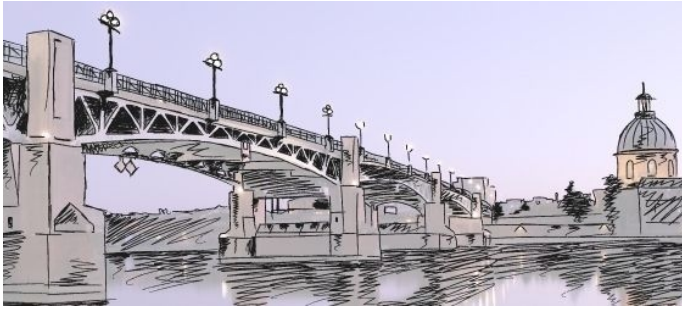


Lunara Smart PIR Motion Sensor IP65



Product information "Lunara Smart PIR Motion Sensor IP65"

PIR motion sesor for Lunara Smart Series

- plug able motion detector suitable for Lunara Smart flood light series with 3,5mm jack connector. tool free installation and adjustable
- Detection area: adjustable 25% to 100% 2m to max. 8m
- Installation height: 1,8m to 4m
- Set-up by the IR remote supplied with the Lunara Smart flood light.
- Hold time after last motion: 10s, 60s, 90s, 3 Min., 6 Min., 12 Min., 15 Min.
- Daylight harvesting value: 10, 20, 50, 100 Lux
- 3 Operation Modes Mode 1: 100% light/off, Mode 2: 100% light and 10% orientation light, Mode 3: 100% light and 20% orientation light
- Power: on/off, Sensor: on/off
- detection angle: 120°

Technical Details:

Power Consumption:	1 W
Ambient Temperature (TA):	-20°C - 40°C
Housing Material:	plastic
Housing Color	black
Coating:	powder-coated
Net Weight:	47 g
Warranty	2 years

Information and Downloads:

