

Alvera Line MKII 600 22-860-3000LM DIM Feuchtraum-/Maschinenleuchte



Product information "Alvera Line MKII 600 22-860-3000LM DIM Feuchtraum-/Maschinenleuchte"

LED Tri-proof light

The Litegear® Alvera is a stylish, waterproof LED fixture with IP65 standard and high mechanical protection. Alvera Line LED is equipped with LED boards with very high system efficiency up to 135 Lumen/Watt and available in different lengths and in different power classes.

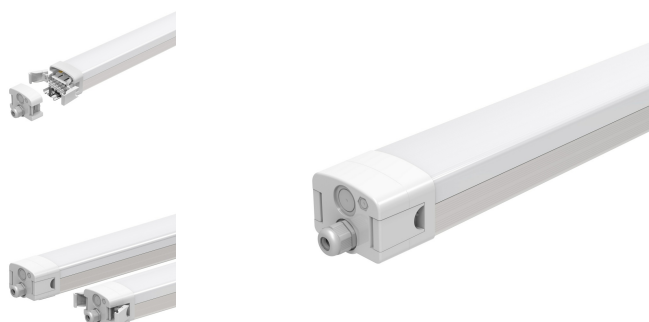
Based on a strong aluminum profile with excellent heat dissipation for long lifespan of up to 50.000 hours and a opal PC diffuser Litegear® created a unique LED weatherproof luminaire with easy and fast installation and daisy chain function trough easy access endcaps and junction terminal. Alvera has a fast cash back due to its excellent performance and high efficiency up to 8000 Lumen. Alvera is the perfect luminaire for industrial applications in factories, warehouse, coolhouse storage, parking lots, sellers or just outside. Up to 5 years full warranty. Alvera comes with a high quality LED driver!

Wide voltage range driver 100-277V AC and CE and UL certificate!

- Dimmbale: via 0-10V signal
- 3x 1,5mm² wire through link with terminal on both sides

optional features:

- CCT-select switch for 3 light colos: 4000K, 5000K, 6500K



Technical Details:

Luminous Flux	3000 lm
Light Yield:	136 lm/W
Light Temperature:	6000 K
Color Rendering Index (CRI)	≥80 Ra
Color Consistency (SDCM):	5
Power Consumption:	22 W
Power Factor (PF):	0.95
Operating Hours:	>50.000 h L80/B10
Switching Cycles:	>100.000
Ignition Time:	<0,5 s
Ambient Temperature (TA):	-15°C - 50°C
Housing Material:	aluminum
Housing Color	white
Dimensions	600x84x73 mm
Net Weight:	1330 g
Warranty	5 years

Information and Downloads:

