

# Lucello UP Multi-CCT BL-Aufbau-Panel 6262-40-830/840-5230LM BAP UGR 19



## Product information "Lucello UP Multi-CCT BL-Aufbau-Panel 6262-40-830/840-5230LM BAP UGR 19"

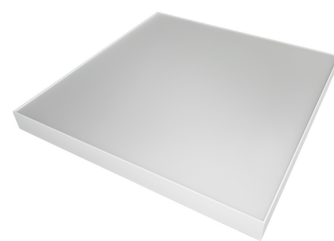
LED Backlight Surface mounting Panel OneFitAll

For computer workstations - suitable according to EN 12464-1 for screens with high luminance!

- elegant slim frame
- Including innovative slim LED driver.
- Very low power consumption and high system efficiency: 140lm/W
- CCT Select: select able light colour by switch on the panel backside: 3000, 3500, 4000 Kelvin
- Replacement for traditional surface troffer lights: 4x 18W T8 fluorescent tubes
- excellent price/performance ratio, fast ROI, Power Select: 33, 36, 40W / 850-1050mA
- Diffusor made from UV stabilized PS
- wide beam angle and very uniform light distribution

### Applications:

Shops, corridors, production areas, storage rooms, warehouse, dressing rooms, health club, Fitness, meeting rooms, school



## Technical Details:

Luminous Flux	5230 lm
Light Yield:	140 lm/W
Light Temperature:	3000,3500,4000 K
Color Rendering Index (CRI)	≥80 Ra
Color Consistency (SDCM):	3
Power Factor (PF):	0.95
Operating Hours:	>124.000 h L80/B10
Switching Cycles:	>70.000
Ignition Time:	<0,5 s
Ambient Temperature (TA):	-30°C - 45°C
Housing Material:	steel
Housing Color	white
Coating:	lacquered
Dimensions	625x625x55 mm
Net Weight:	4750 g
Warranty	5 years

Information and Downloads:

