

Order number: LG31473DAHE

Xona Maxima Basic Unit 240FL 70/150-840-28500LM 190lm/W Dali Dim



Product information "Xona Maxima Basic Unit 240FL 70/150-840-28500LM 190lm/W Dali Dim"

LED linear light system 240cm luminaire unit with Dali

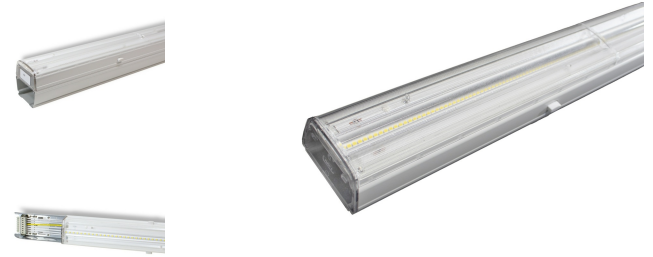
The Basic Edition is the most cost effective version of the modular Litegear® Maxima LED light line system. With a system efficiency of up to 190 lumens / watt, this system not only convinces with its technical best values but also with a very attractive price. The system consists of a trunking support profile with integrated wiring and connectors for almost tool-free fast mounting and a light module which is locked into the mounting rail. The luminaire modules consist of an electronic ballast, LED boards and optical covers with selectable, different beam angles. The LED modules are available in 4 different light colors: 3000K, 4000K, 5000K and 6000 Kelvin as well as in 3 performance versions: 35W, 50W and 70W. This diversity results in lighting solutions for a wide variety of applications. The support profiles are available up to a length of 3U = 450cm in 3 versions: 5-wire (3 phases), 8-wire (3 phases with Dali / 1-10V and continuous current) and 12-core (3 phases, Dali / 1-10V, emergency lighting). The trunking support profiles can be suspended from the ceiling by means of a steel cable, chain, clip or rod. In addition, special mounting clips for grid ceilings are available. Optionally, the luminaire modules are also available in dimmable version and with battery emergency power supply.

Application:

- industry and warehouse
- sales areas and exhibition
- office and workshop

Advantages:

- out put select: 70-150W in steps of 10W power select
- fast, cost-effective installation
- 240cm LED unit, for 300cm trunking you need a 60cm blank



Technical Details:

Luminous Flux	28500 lm
Light Yield:	190 lm/W
Light Temperature:	4000 K
Color Rendering Index (CRI)	≥80 Ra
Color Consistency (SDCM):	6
Power Consumption:	70, 90, 110, 130, 150W W
Power Factor (PF):	0.98
Operating Hours:	>50.000 h L80/B10
Switching Cycles:	>50.000
Ignition Time:	<0,5 s
Ambient Temperature (TA):	-25°C - 40°C
Housing Material:	aluminum
Housing Color	white
Coating:	coated
Dimensions	2401x70x39,4 mm
Net Weight:	2500 g
Warranty	5 years

Information and Downloads:



- long life (>50,000h) and very low maintenance costs
- Dimming via Dali 2.0 or push dim
- emergency power from battery system capable

Accessories:

Daylight and motion sensors, corners and branches, dummy modules, end caps, connectors, support modules for escape lights or power outlets