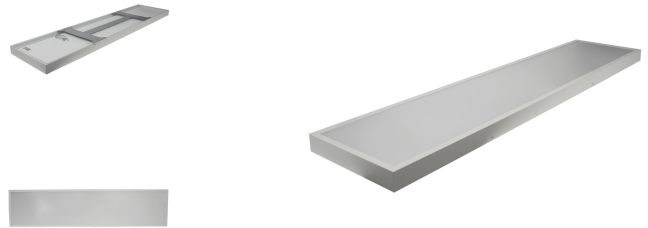


RENOVIA 157/36-40-830/840-5500LM BAP, PMMA



Technical Details:

Luminous Flux	5500 lm
Light Yield:	130 lm/W
Light Temperature:	3000, 3500, 4000 K
Color Rendering Index (CRI)	≥80 Ra
Color Consistency (SDCM):	5
Power Consumption:	33, 36, 40 W
Power Factor (PF):	0.95
Operating Hours:	>70.000 h L80/B10
Switching Cycles:	>100.000
Ignition Time:	<0,5 s
Ambient Temperature (TA):	-30°C - 45°C
Housing Material:	aluminum
Housing Color	white
Coating:	powder-coated
Dimensions	1570x360x55 mm
Net Weight:	5830 g
Warranty	5 years

Product information "RENOVIA 157/36-40-830/840-5500LM BAP, PMMA"

Surface mounting renovation luminaire with selectable CCT

Renovia serves as a replacement for traditional surface mounted louver luminaires with fluorescent tubes. The larger housing can easily cover dirty edges outside the old luminaire housing, so no need for a complete ceiling painting.

Easy installation due to separate ceiling mount plate with electronic ballast with terminal. The LED light is simply hung in the holder, easy for service! Uniform, wide light distribution with low glare due to microprismatic optical material. Optical part made of UV and temperature-resistant polymethyl methacrylate (PMMA). Eye-friendly, flicker-free LED light. Long life electronic driver > 50,000 hours.

- CCT Select: 3000, 3500, 4000 Kelvin
- Optionally available in dimmable version: Dali, Push-Dim, 1-10V, Radio, Zigbee
- Available in 3 different sizes and power ranges.

Information and Downloads:



- Version with power select: 33, 36, 40W / 850-1050mA

Applications:

- Office, conference room, computer workstation BAP UGR < 19
EN12464-1
- laboratory, hospital, fitness center
- hall and reception
- Sanitary facilities and corridors