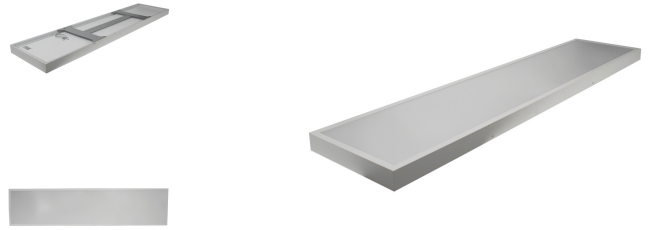


RENOVIA 150/30- 40-830/840-5200LM BAP, PMMA, DALI DT6 Push DIM



Technical Details:

| | |
|-----------------------------|-------------------|
| Luminous Flux | 5200 lm |
| Light Yield: | 130 lm/W |
| Light Temperature: | 3000/4000 K |
| Color Rendering Index (CRI) | ≥85 Ra |
| Color Consistency (SDCM): | 3 |
| Power Consumption: | 32,36,40 W |
| Power Factor (PF): | 0.95 |
| Operating Hours: | >70.000 h L80/B10 |
| Switching Cycles: | >100.000 |
| Ignition Time: | <0,5 s |
| Ambient Temperature (TA): | -20°C - 45°C |
| Housing Material: | aluminum |
| Housing Color | white |
| Coating: | powder-coated |
| Dimensions | 1500x300x50 mm |
| Net Weight: | 4260 g |
| Warranty | 5 years |

Product information "RENOVIA 150/30- 40-830/840-5200LM BAP, PMMA, DALI DT6 Push DIM"

Surface mounting renovation luminaire

Timeless surface mount luminaire. Easy install on flat surfaces such as concrete, wood or plaster boards. Fast installation due to separate ceiling mounting plate. The LED light is simply hung in the holder, easy for service! Uniform, wide light distribution with low glare due to microprismatics optical material. Optical part made of UV and temperature-resistant PS Diffusor.

Eye-friendly, flicker-free LED light. Long life electronic driver > 50,000 hours.

- Dimmable version: DALI 2, Push-Dim
-
- Power Select: 32, 36, 40W
-
- Available in 3 different sizes and power ranges.

Applications:

Information and Downloads:



- laboratory, hospital, fitness center
- hall and reception
- Sanitary facilities and corridors