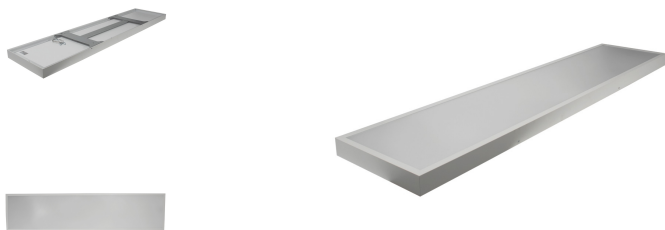


RENOVIA 150/30- 40-830/840-5200LM BAP, PMMA, DALI DT6 Push DIM



Technical Details:

Luminous Flux:	5200 lm
Light Yield:	130 lm/W
Light Temperature:	3000/4000 K
Light Color:	CCT Select
Color Rendering Index:	≥85 Ra
Color Consistency (SDCM):	<3
Beam Angle:	90 °
Unified Glare Rating (UGR):	<19
Light Emission:	downward
Dimmable:	✓
Method of Dimming:	DALI,Push-Dim
LED-Chip Manufacturer:	San'an
LED-Chip:	SMD 2835
Number of LED:	144
Ignition Time:	<0,5 s
Input Current:	AC 220-240V, 50/60Hz
Power Consumption:	Power Select (32,36,40 W)
Contains Driver:	✓
Driver Manufacturer:	Lifud GSD040YE
Power Factor (PF):	>0.95
Input Driver:	terminal
Output of Driver:	DC 25-42V, 850-1050mA
CC/CV:	CC
Output Current Adjustable:	✓
Input Lamp:	plug connector
Switching Cycles:	>100.000
Electrical Protection Class:	I
Ambient Temperature (TA):	-20°C - 45°C
Storage Temperature:	-20°C - 55°C

Dimensions:	1500x300x50 mm
Mounting:	ceiling,wall
Montageart:	surface mounted
IP Class:	20 (40 room side)
IK Code:	04
Housing Color	white
Housing Color (RAL Code):	similar 9016
Housing Material:	aluminum
Coating:	powder-coated
Special Feature of Housing:	zweiget. Anbaugehäuse
Cover:	Mikroprismatisch PMMA
Net Weight:	4260 g
Type of Packaging:	box
Weight incl. Packaging:	5.08 kg
Content Master Package:	4
Dimensions of Master Package:	1570x385x360 mm
Weight Master Package:	22,3 kg
Product Line:	Advance Line
Warranty	5 years
Operating Hours:	70.000 h L80/B10
Disposal Obligation:	✓
Customs Tariff Number:	9405119090
Certifications	CE
Barcode:	4250557827001
Anbauleuchte für Beton- Holz- oder GK- Decken	
Load: B10: 25, B16: 35, C16: 35 Leuchten	
PMMA Lightguideplate, anti yellow	
Bildschirmarbeitsplatztauglich DIN EN12464-1	
Dali DT6 Push DIM CCT Select 3000/4000K	

